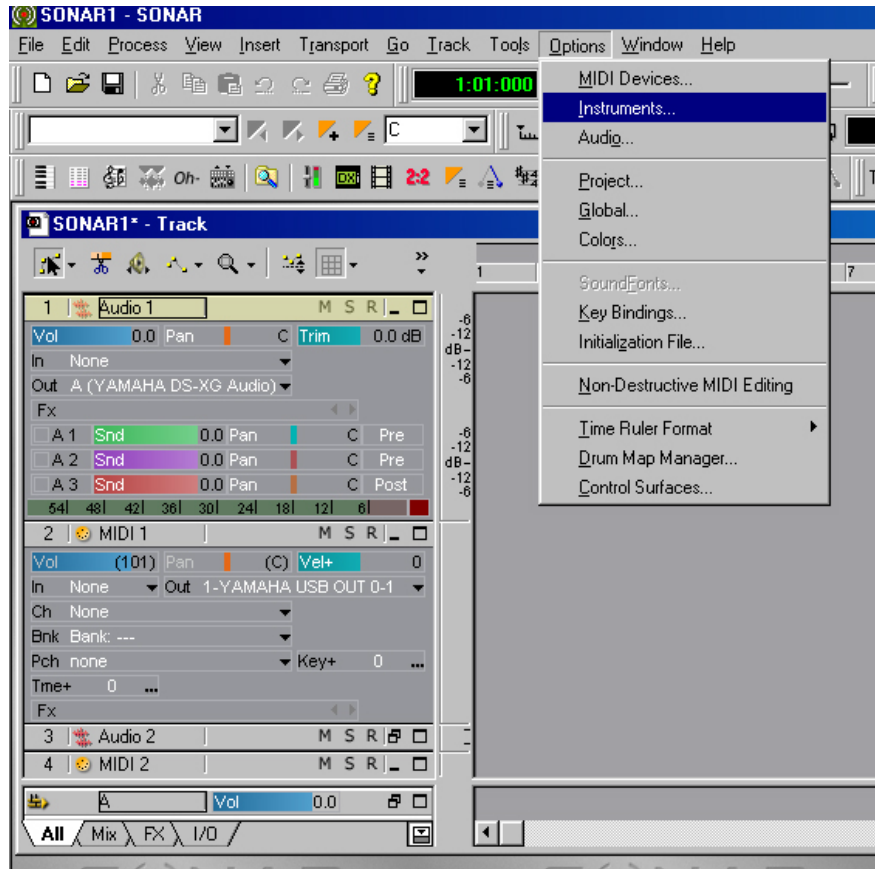


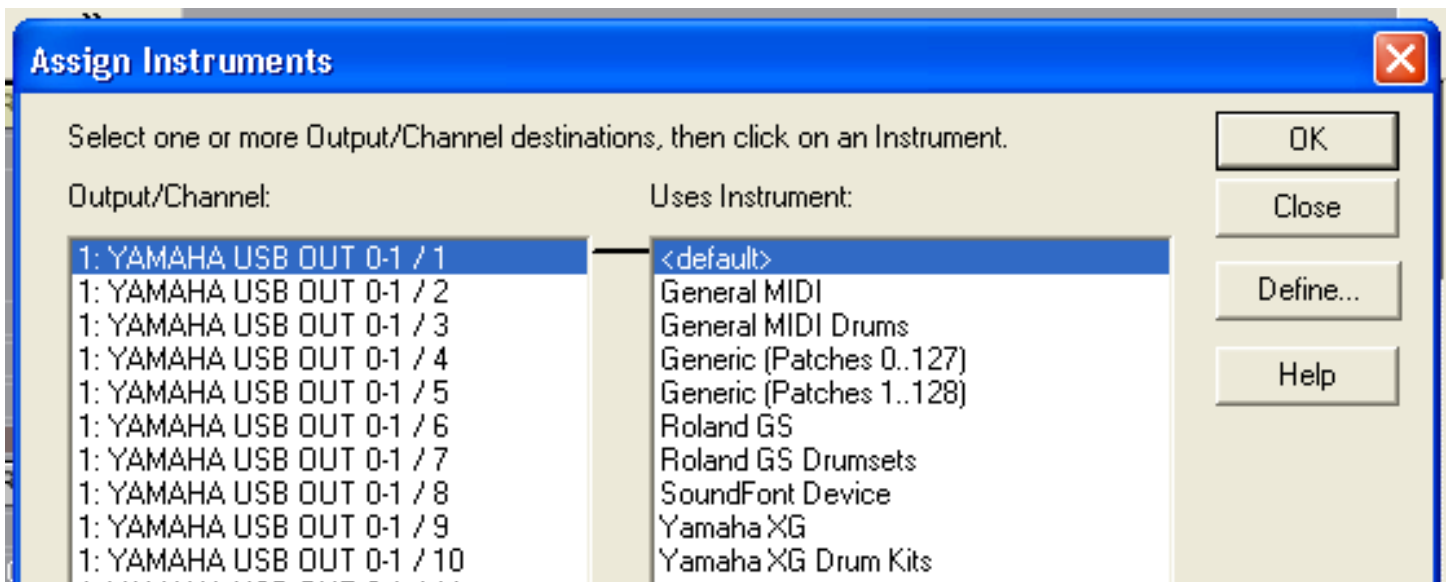
How to install the Motif ES Sonar instrument definition file:

Download the Cakewalk.ins file " MotifESDefn.ins" to a place where you can easily locate it (i.e. your desktop).

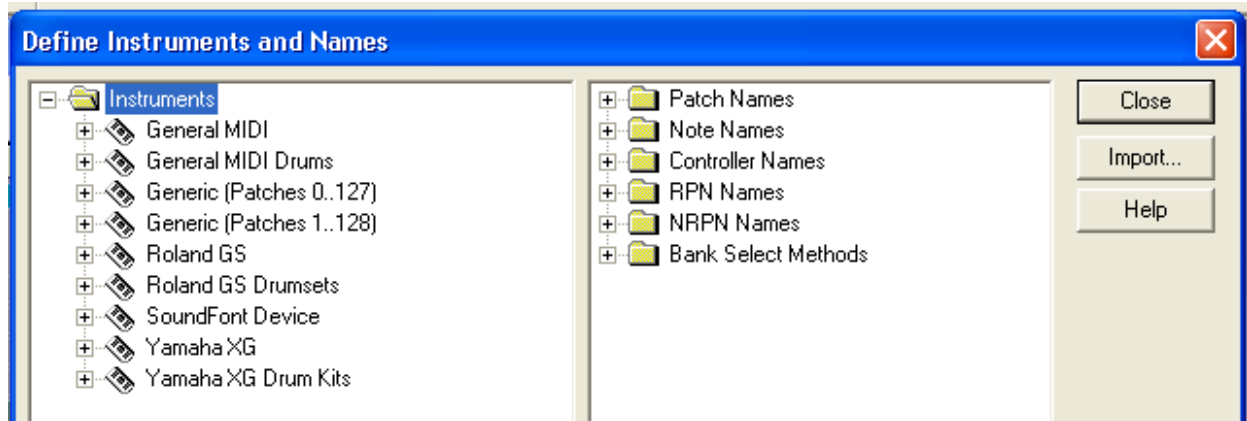
After opening Cakewalk/Sonar, go to the **Options** menu. And "click" on [INSTRUMENTS].



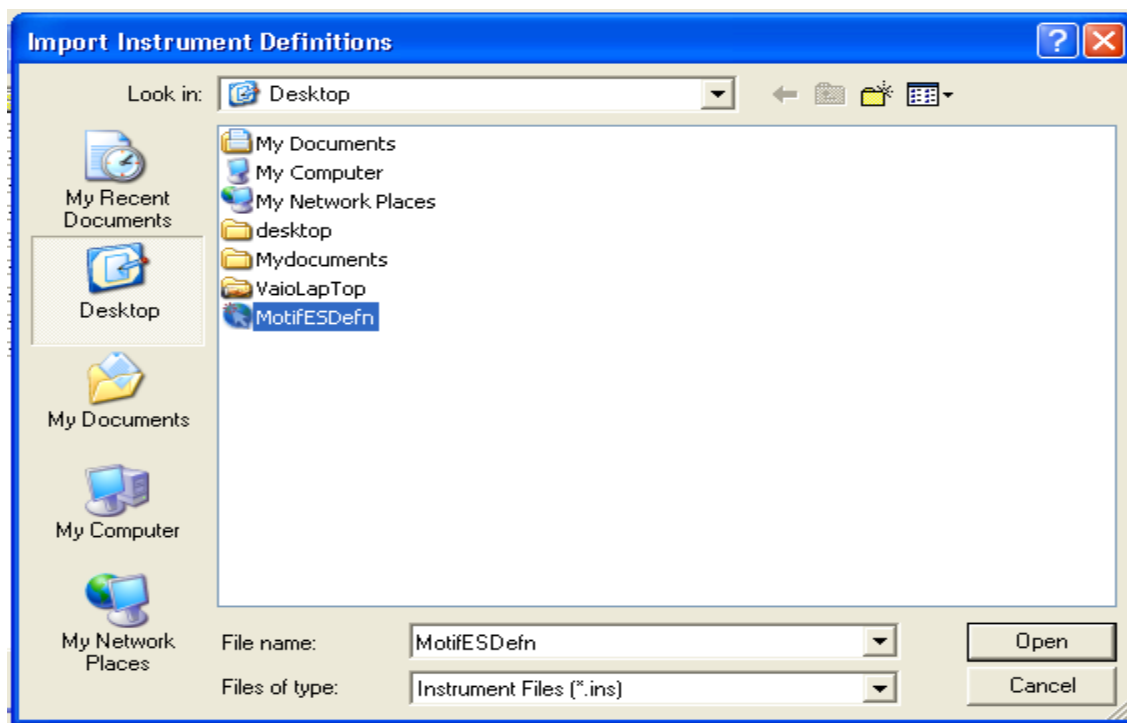
"Click" on [DEFINE].



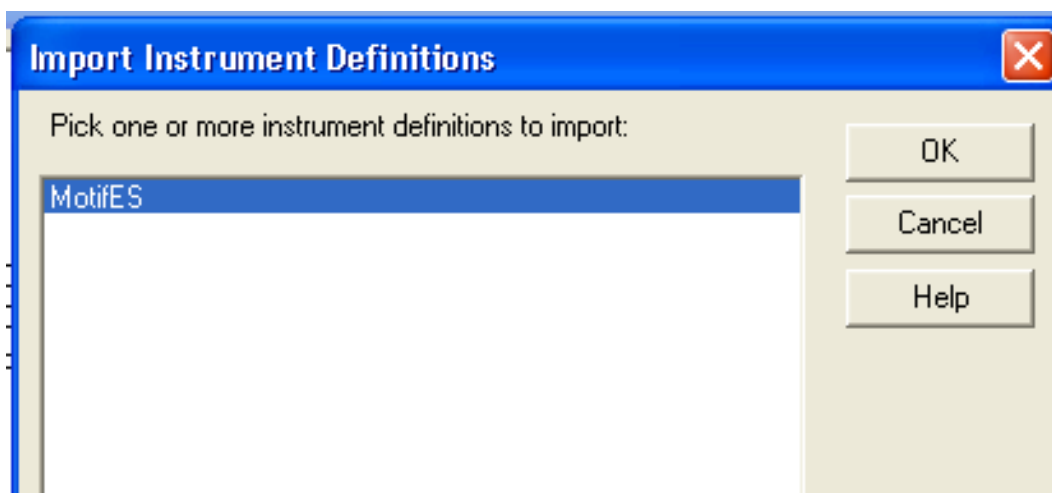
"Click" [IMPORT] and go to where you downloaded the .ins file.



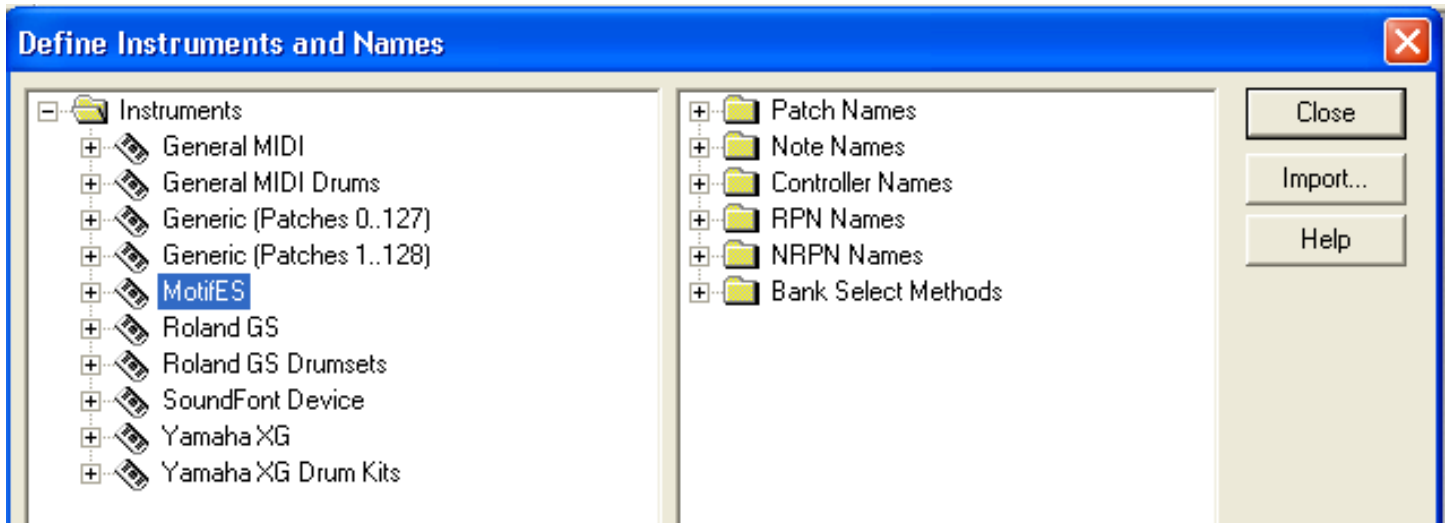
Select the .ins file and then "Click" on [OPEN].



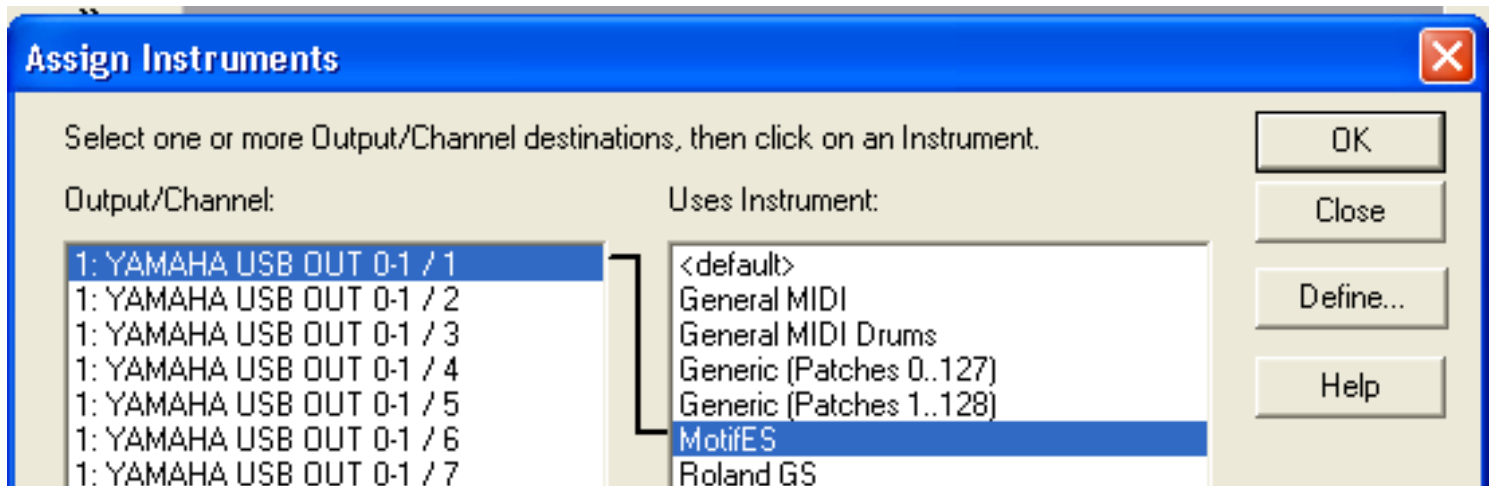
Select the .ins file by highlighting it and click [OK].



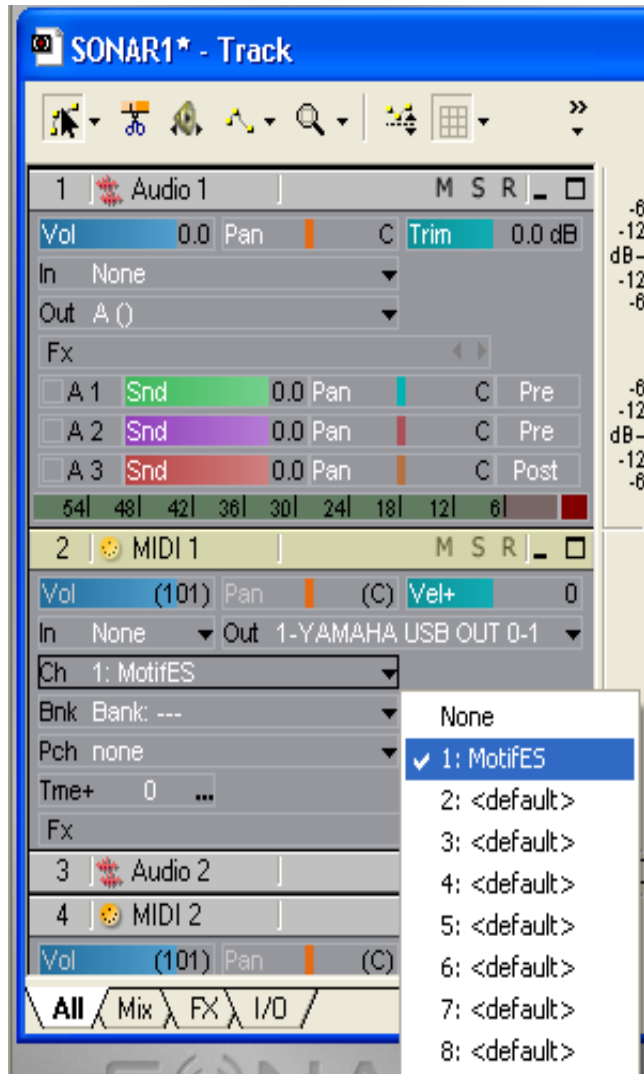
After the file has been imported "click" on [CLOSE].



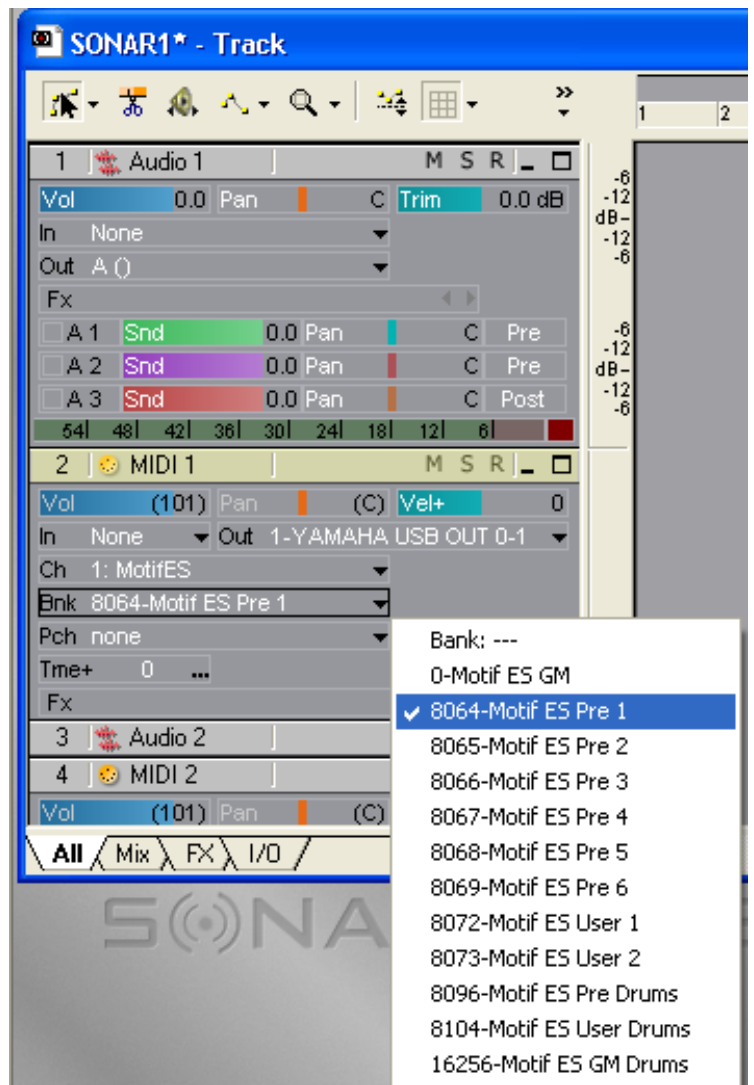
Select which PORT or PORTS you wish the new definition to define in the left window (if the Motif is your only MIDI device then select them all). Select the definition you wish to use in the right window and "click" [OK].



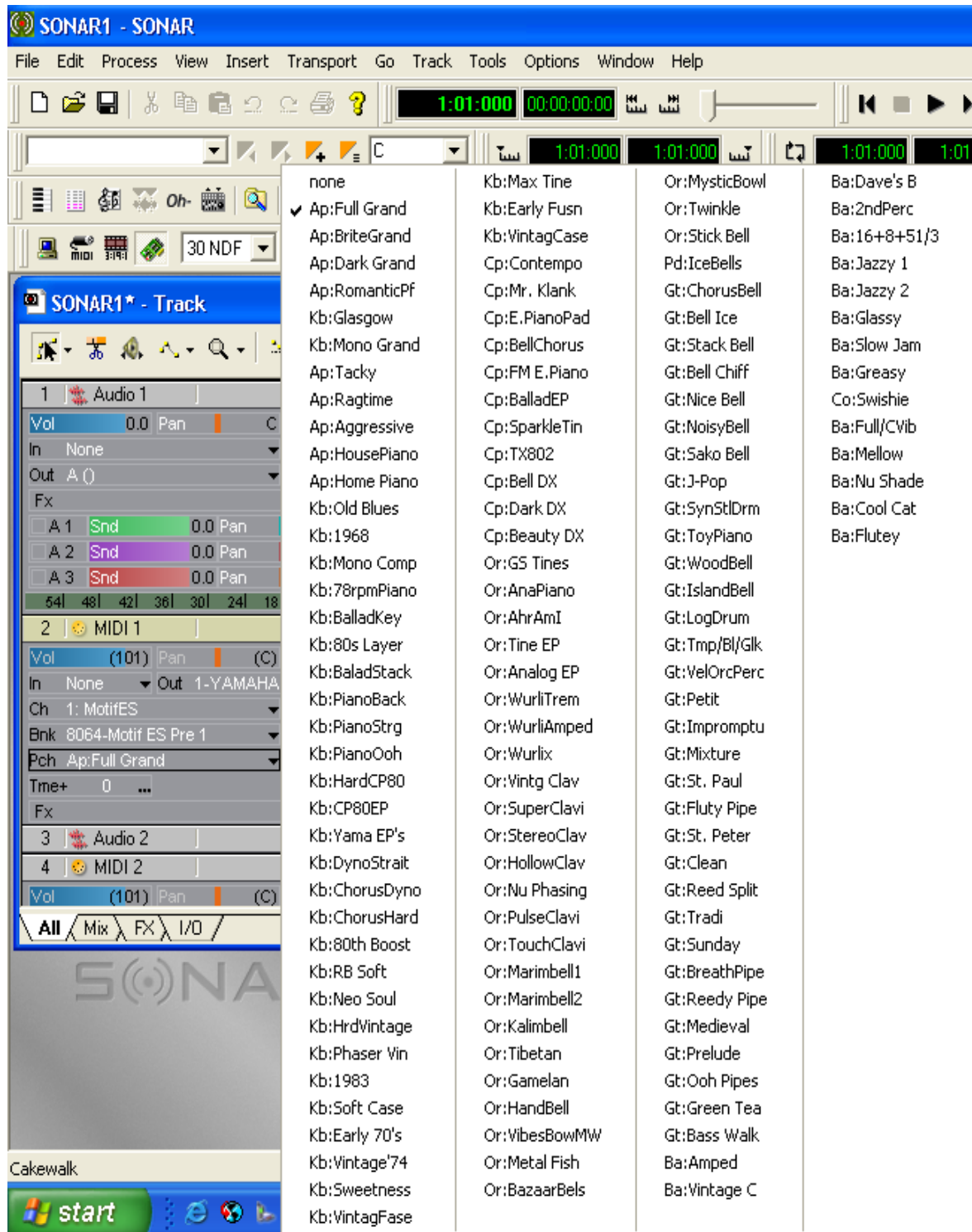
Select a MIDI track & then select a channel.



Select a BANK.



Select your patch name.



Tony Escueta
 Manager, Field Product Support
 Technology Products
 Yamaha Corporation of America