



POWER USER

MUSIC PRODUCTION and PERFORMANCE

A black rectangular box containing the text "S70XS S90XS" in a white, elegant, cursive script font.

With the S90XS/S70XS

USB-MIDI QUICK SETUP GUIDE

Macintosh: Cubase AI with STUDIO MANAGER and
The S90 XS / S70 XS Editor

Phil Clendeninn
Senior Technical Sales Specialist
Technology Products
©Yamaha Corporation of America

This guide will take you through setting up your Macintosh computer for MIDI communication with the S90 XS/S70 XS. This will facilitate MIDI recording and use of the Editor via Cubase and the Studio Manager. The Studio Manager and the Editor can be used with or without Cubase. Studio Manager can run as a standalone application and can act as the host for the Editor. Or, as is outlined in this article, Cubase can encompass the Studio Manager and the Editor – which run *inside* the DAW's environment. The advantage here is that you do not have to bother save a separate file for your synthesizer, because when you save your Cubase Project it will automatically save all the settings for your S90 XS/S70 XS and keep them bundled together in the .CPR file. This means when you reopen the Project you can have the Studio Manager's Total Recall feature restore all the settings to your synthesizer just as they were when you completed work.

A word about AUDIO

The USB-MIDI connection is **MIDI only**. It does not allow you to route audio from the synthesizer into the computer. In order to transfer audio data in real time (i.e., record AUDIO TRACKS) you will need a separate audio interface.

The S90 XS/S70XS offers you several ways to record audio data. Audio data, of course, is used to create .wav files that are used for audio CDs. Audio data can be turned into MP3 files that, due to their reduced size, are convenient for posting on websites or emailing to friends.

The subject of creating AUDIO data will be in a separate article.

S90 XS / S70 XS

USB-MIDI Quick Setup - Macintosh OS X/Cubase AI / S90 XS/S70 XS Editor with Studio Manager

Install "Cubase AI" on your computer

Download and install the following software by going to the S90XS/S70XS official page at:

http://www.yamahasynth.com/downloads/drivers_software/synthesizers/s9070_xs/all/

Download and install the latest "S90 XS/S70 XS Remote Extensions" Version 1.0.2

Download and install the latest "Studio Manager" Version 2.3.2

Download and install the latest "S90 XS/S70 XS Editor" Version 1.3.0 (in this example we are using Studio Manager, not the VST editor which will be discussed in a separate article)

Download and install the Yamaha USB-MIDI driver version 1.2.1. The editor requires multiple ports to connect with the S90 XS/S70 XS, therefore you MUST use USB-MIDI to utilize editors.

Connect via USB

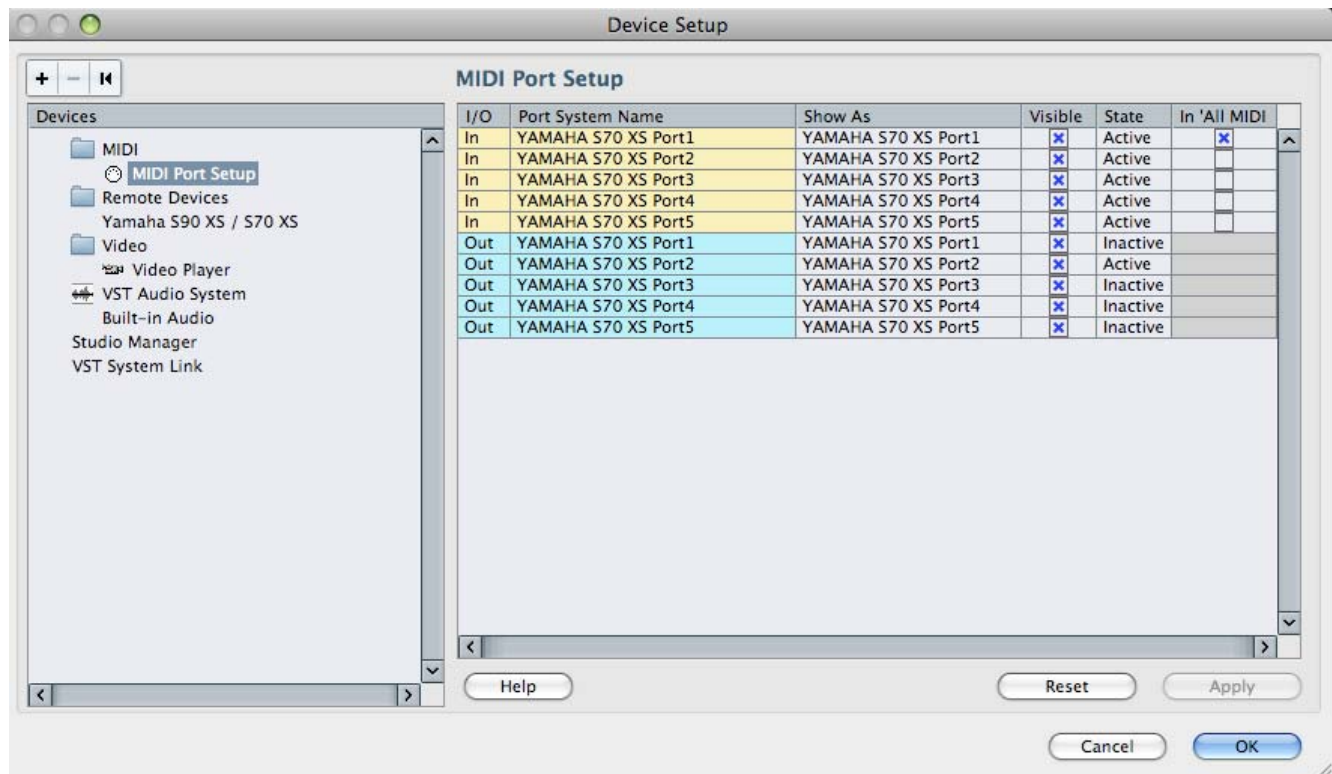
- Connect the XS to your computer via USB.

Set the XS to MIDI IN/OUT = USB

- Press [UTILITY]
- Select "MIDI"
- Press [ENTER]
- Cursor down to MIDI IN/OUT
- Set MIDI IN/OUT = USB
- Press [STORE] to write this to your Flash ROM

Launch Cubase AI

- Click DEVICES
- Select DEVICE SETUP...
- Under the "MIDI" folder highlight "MIDI PORT SETUP"
- You should see your Yamaha S90 XS/S70 XS PORTS. The example below uses an **S70 XS**
- Select only "Yamaha S70 XS Port1" as the "In 'All MIDI"

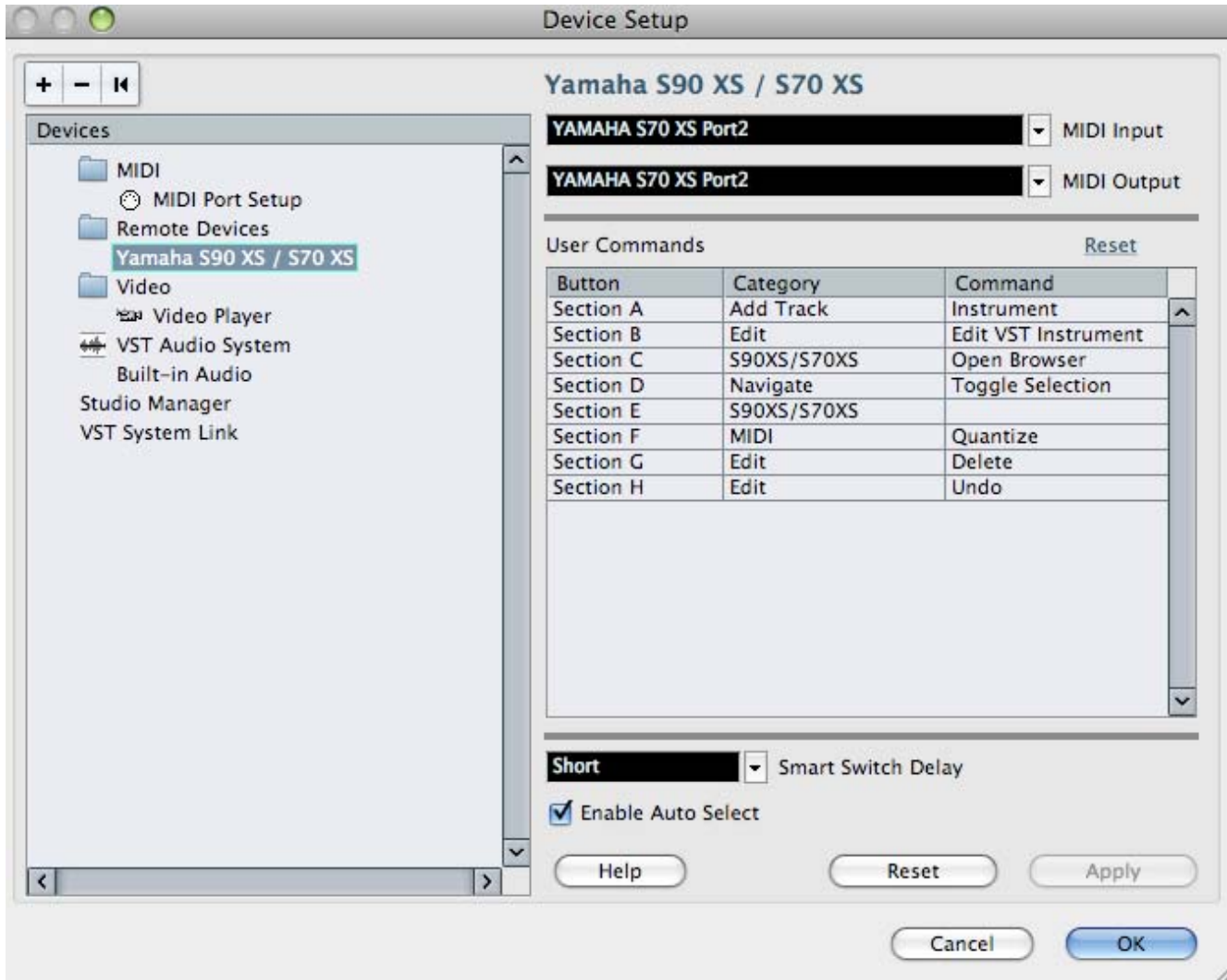


You do not have to worry about the "State" (Active/Inactive) as this is only a current status report. You do **not** want to have Port 2 marked in the **IN ALL INPUTS** column as this is reserved for REMOTE CONTROL functions. If you have another controller keyboard plugged into the MIDI IN jack of the XS, you could possibly activate **Port 3** (this is the so-called "THRU PORT"). The **"In 'ALL INPUT'"** function is for your keyboard or MIDI controllers only. This is the data that will be recorded to a Cubase MIDI Track.

- Under the **"Remote Devices"** folder highlight "Yamaha S90 XS/S70 XS"

If it does not appear click on the big "+" symbol in the upper left and **ADD** the "Yamaha S90 XS/S70 XS" device.

- Set it to Port 2 (YAMAHA S70 XS Port2) for both MIDI IN and MIDI OUT



If you are using an **audio interface** connect that now under the "VST Audio System". Use the driver that is appropriate for your interface. If you are only recording MIDI you do not need an audio interface (in which case you can skip this step).

- Click APPLY
- Click OK

Launch the STUDIO MANAGER

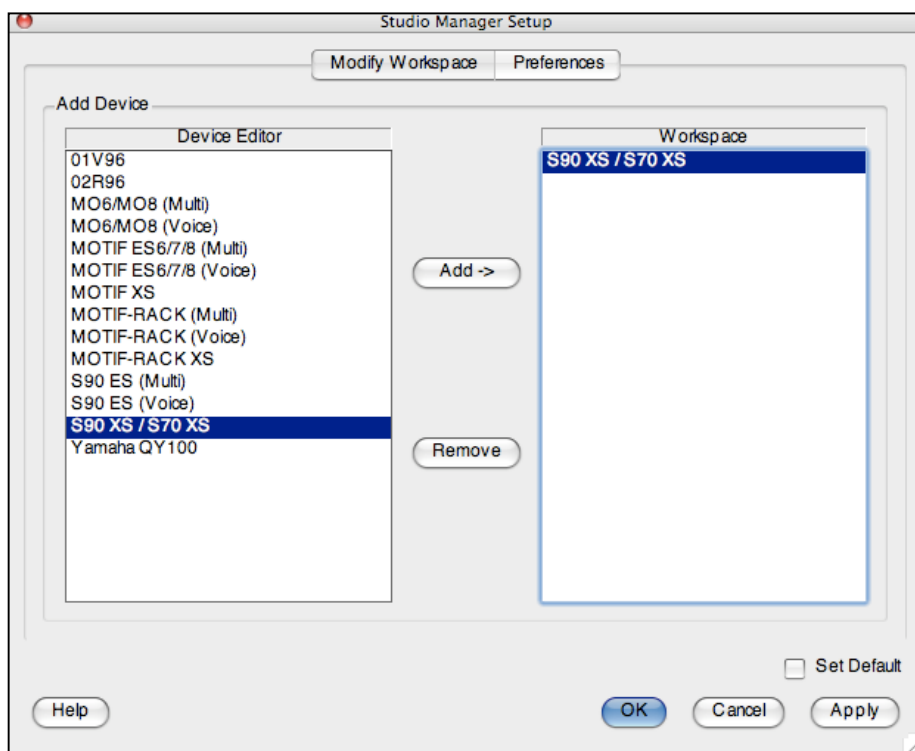
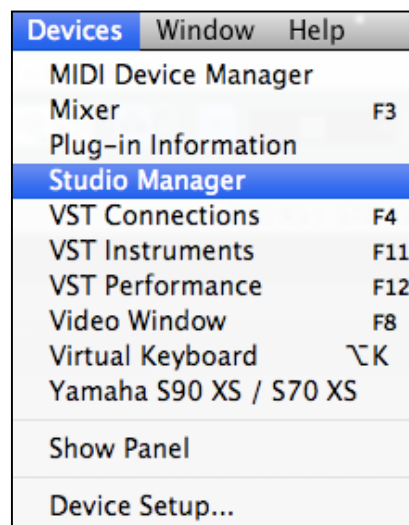
Studio Manager is a “Host Application” that will address your external hardware (XS). It also can be the launch pad for various hardware Editors you may want to run while doing a Project. Yamaha provides Editors for digital mixers, synthesizer keyboards/modules and effect processors.

- On the Cubase Toolbar click on **DEVICES**
- Select **STUDIO MANAGER** from the drop down menu (shown at right)

This will launch the **Studio Manager** host application within Cubase.

- Go to FILE > SETUP on the Studio Manager toolbar.

If it is not already added, you want to “ADD” the “S90 XS/S70 XS” editor to your Workspace. There will be a list of “Device Editors” on the left side of the dialog box; {ADD} in the middle and your “Workspace” on the right side of the dialog box. Select the item, click ADD and it will appear in the WORKSPACE.



- Click APPLY
- Click OK

This will place the S90 XS/S70 XS icon in your Studio Manager Workspace and return you to the icon launch pad.

Double click the icon to launch the Editor

Setup the S90 XS/S70 XS Editor

- Click on FILE > SETUP on the Editor toolbar

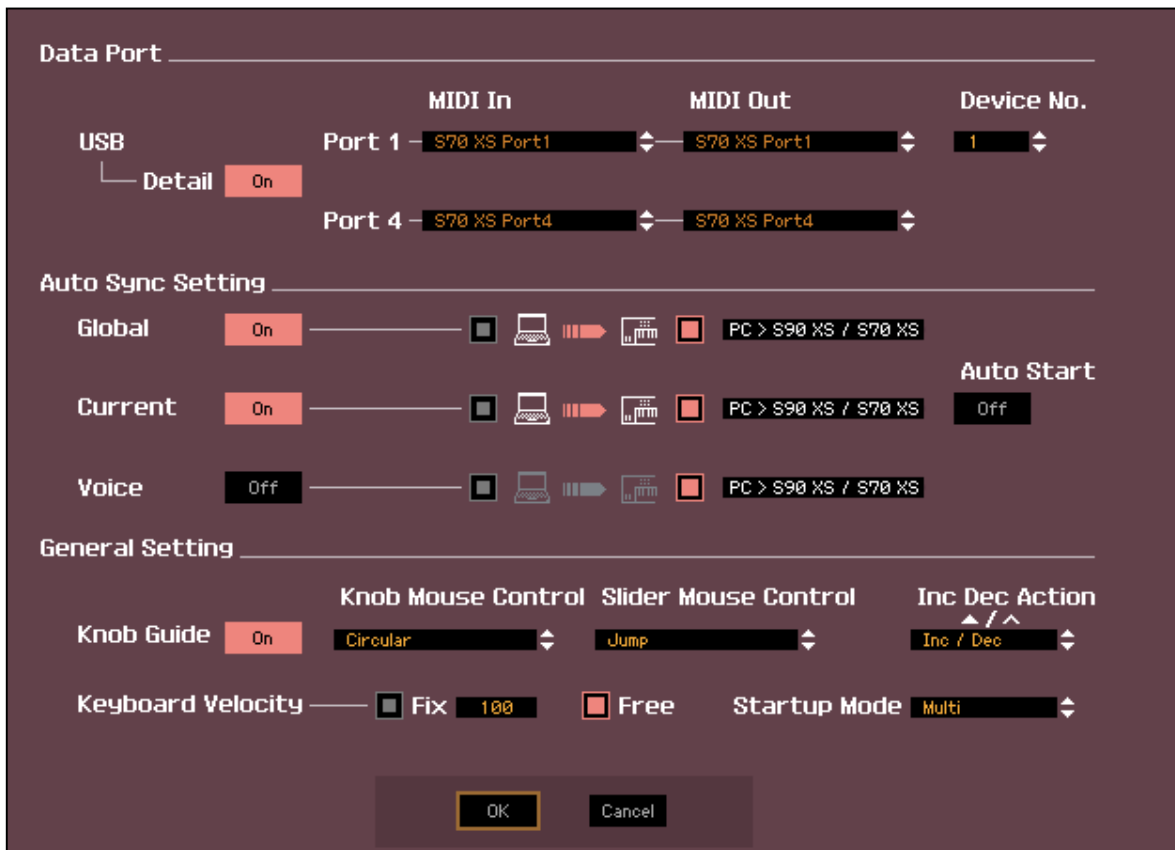
Here you want to setup the communication between the XS and the Editor.

- Select USB as the DATA PORT
- Set the DETAIL = ON (shown below)

Make settings for Port 1 and Port 4. The USB connection requires a two-way, two port communication.

Next you make a decision about the direction of communication. There are two things to consider:

- 1) When you open a New Project in Cubase, how do you want the Editor to behave?
- 2) When you open a previously saved Project, how do you want the Editor to behave?



Typically, when you create a New Project you will want the Editor to clear a new MULTI for you. Therefore you will want to have data sent **FROM** the Editor **TO** the XS. When you are restoring a previously saved Cubase Project you will want the Editor to send your saved data back to the XS. Therefore you will want to have data sent FROM the Editor TO the XS.

As you can see I have the “Auto Sync Setting” set so both GLOBAL and CURRENT are going from PC > XS

This is so that the *Total Recall* function will send the UTILITY settings and the current MULTI **from** the computer **to** the XS when I open a Cubase Project. Restoring my MULTI to my XS. It will send an initialized MULTI setup to the XS when I create a New Project. Cool!

I have the VOICE option set to **OFF**, as I don’t often need to reload all the User Voices (but you can set this as your prefer). If set to ON, then the Editor can restore all your USER1, USER2, USER3 and USER Drum Kit Voices to your XS each time. It is your choice. If you have used a unique Library of sounds, they too can be recalled when you open the Cubase Project. These settings are important and should be considered on a per Project basis.

Auto Start is OFF. You may opt at some point to turn this ON. I recommend that until you are used to how the EDITOR works you leave AUTO START set OFF. When ON, synchronization takes places automatically.

Set the “GENERAL SETTING” area as you prefer. The Keyboard Velocity function when set to “FREE” will change how loud the note plays by where on the keyboard icon KEY you click. This is pretty cool...

- Click OK

ONLINE/OFFLINE

Clicking this switches the status of the Editor between “ONLINE” and “OFFLINE.” When “ONLINE” is indicated, the edited status is completely synchronized between the S90 XS/S70 XS Editor and the S90XS/S70 XS instrument, meaning that any parameter edit you make on the S90 XS/S70 XS Editor is reflected in the same parameter on the S90 XS/S70 XS instrument and vice versa. When OFFLINE is

selected, editing on the S90 XS/S70 XS Editor will not affect the S90 XS/S70 XS instrument and vice versa even if the S90 XS/S70 XS instrument is connected to a computer.

Note that the indication here is automatically changed according to the status of communication between the S90 XS/S70 XS Editor and the S90 XS/S70 XS instrument. For example, the ONLINE status changes automatically to OFFLINE when the cable is disconnected accidentally.

The screenshot shows a status indicator with three numbered items:

- 1 ONLINE**
Indicates that the current status is set to ONLINE. Clicking this calls up OFFLINE (2) described below. Keep in mind that the ONLINE indication cannot be enabled when the MIDI Port is not set properly or the S90 XS/S70 XS instrument is not properly connected to a computer.
- 2 OFFLINE**
This OFFLINE indication shows that the MIDI Port is set properly and the S90 XS/S70 XS is properly connected to a computer. Clicking this calls up the Auto Sync window. From the Auto Sync window, you can synchronize the settings between the S90 XS/S70 XS Editor and the S90 XS/S70 XS by clicking the [Start] button. As soon as data synchronization is completed, the Auto Sync window is closed and the status of the Editor changes from OFFLINE to ONLINE.
NOTE When the Global, Current and Voice settings are set to "Off" and Auto Start is set to "On" in the Auto Sync window, clicking here changes the Editor status from OFFLINE to ONLINE without opening the Auto Sync window.
- 3 OFFLINE**
This OFFLINE indication shows that the MIDI Port is not set properly or the S90 XS/S70 XS instrument is not connected to a computer properly. Clicking this calls up the Auto Sync window. After making sure to connect the S90 XS/S70 XS instrument to a computer, set the MIDI Port properly then click the [Start] button in the Auto Sync window to execute data synchronization between the S90 XS/S70 XS Editor and the S90 XS/S70 XS instrument. As soon as data synchronization is completed, the Auto Sync window is closed and the status of the Editor is changed from OFFLINE to ONLINE.

On the main XS Editor screen you want to make sure that the Editor is **ONLINE**.

A bright dot appears next to ONLINE when you are communicating. In the left upper corner you will see the Modes: VOICE and MULTI followed by the "ONLINE" button.

Communication is bi-directional and simultaneous so selecting the mode here will change your hardware and vice-versa.

The OFFLINE w/bright dot indicator is important because you will at some point need to make changes on the hardware and not have the software follow you. This can occur when you are searching for a VOICE or PERFORMANCE in the XS – the Editor will attempt to synchronize each time you select something. Therefore it is useful to click this option (go OFFLINE) when you want to temporarily break communication. You can click ON and OFFLINE, as necessary.

If you change modes and go to PERFORMANCE mode on the XS hardware front panel, the XS Editor will go temporarily *OFFLINE w/bright dot. You can bring it back ONLINE when you return to MULTI mode by simply clicking the word "OFFLINE" – the AUTO SYNC window will open and re-establish communication.

On the Toolbar of the XS Editor you will see the **BULK** option. This is what you use to *request* a bulk to (Transmit) or from (Receive) the XS. You can select the Current MULTI, and any of the USER Banks or ALL of the USER Banks.

Do not change your preference in the FILE > SETUP > AUTO SYNC SETTING – when you need to send or receive data from the XS use this BULK option.

- Click BULK > DATA SYNC

Set the attributes that you wish to send or receive, then click "START".